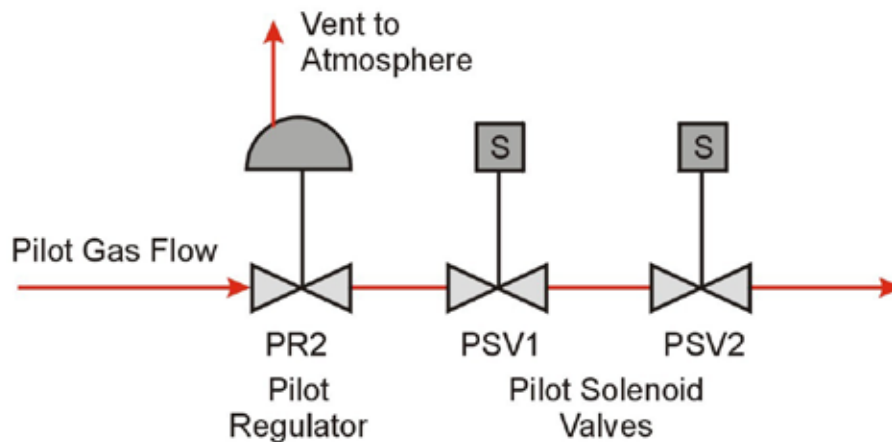




Gas Train Design

MEGTEC Systems improved the design of the gas trains for all new drying and pollution control equipment. Instead of providing one pilot solenoid valve (controls flow of gas to pilot), the standard gas train contains two valves.

While the single solenoid valve has generally proven reliable, there have been cases where they have failed to operate, leaving gas pilot flames burning after the equipment is shut off. For this reason, MEGTEC has gone to a redundant system for reliability.



If any MEGTEC, MEG, TEC or Thermo Wisconsin Inc. gas-fired equipment at your plant is a single pilot solenoid design, MEGTEC Systems strongly recommends immediate installation of an additional pilot solenoid valve next to the existing valve, creating a safety backup. Until that is completed, MEGTEC recommends performing a visual check that the pilot flame has extinguished as part of the standard press shutdown procedure. If the pilot is not extinguished after the press is shut down, immediately close the manual gas supply valve and replace the defective solenoid.

***In order to help us offer you the correct upgrade kit for your machine, please supply the following information: Machine type • Serial number • Manufacturing year • Burner size**

For further information, availability, please contact your nearest MEGTEC office by visiting www.megtec.com and click on parts and upgrades or email to info@megtec.com.