



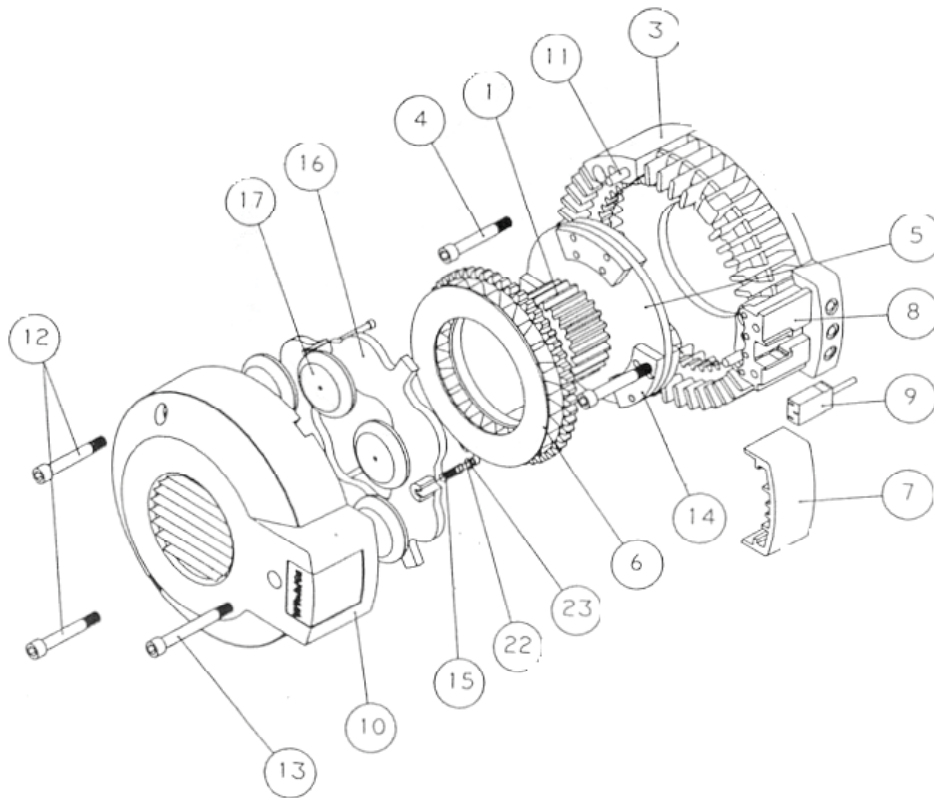
# CTC/ACT Splicer Brake Maintenance

## Pneumatic Brake

Check the brake once a month for wear. Also make sure that it is clean. If not, use compressed air to blow it clean.

The outer and inner splines have to be lubricated every six months. Disassemble the housing and lubricate the dry film anti-scuffing spray (Rocol Oxyube, Rocol Chainguard 550 (formerly L585), or Dri-Slide).

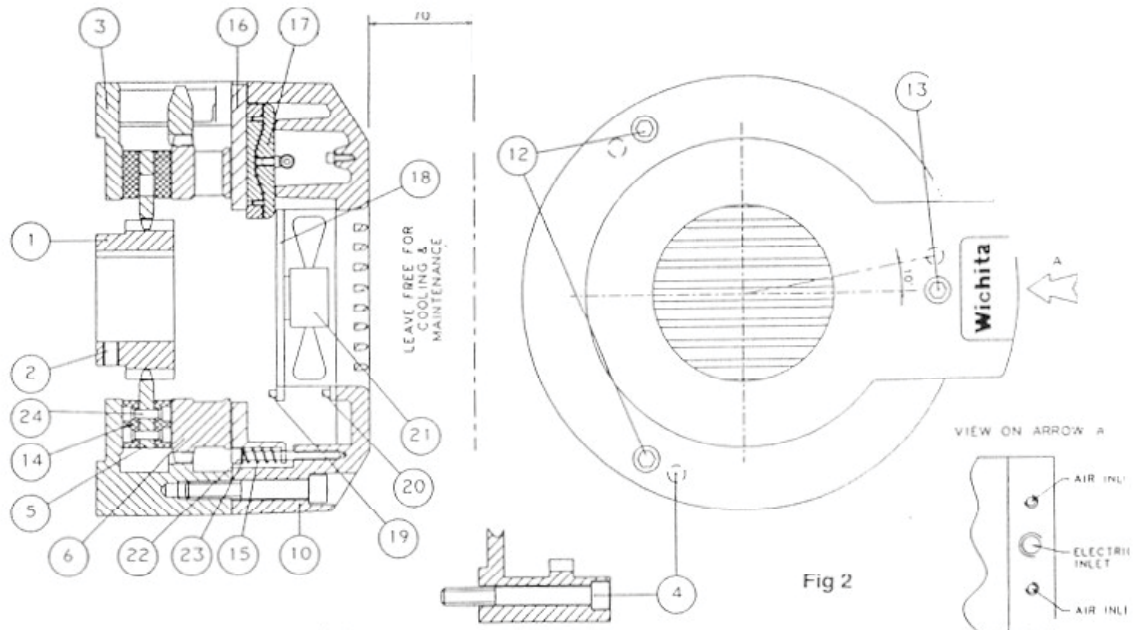
Also check that the brake pistons move smoothly. If necessary, lubricate the O-ring on the piston with Molycote M55. Check and lubricate every six months.



Recommended Tightening Torque for Bolts

Item Number	4	12 & 13	19 & 20
Tightening Torque NM	85	40	2
Tightening Torque LB inch	750	350	18

# CTC/ACT Splicer Brake Maintenance



**Note:** The head of #22 bolt is to be flush with pressure plate # 16

1. Hub	9. Electrical Connector	17. Actuator
2. Set Screw	10. Front Casing	18. Fan Guard
3. Back Casing	11. Location Pins	19. Guard Bolts
4. Mounting Bolts	12. Short Bolts	20. Fan Bolts
5. Center Plate	13. Long Bolts	21. Fan
6. Floating Plate	14. Friction Segments	22. Return Bolts
7. Electrical Cover	15. Return Spring	23. Washer
8. Connector Block	16. Pressure Plate	24. Rivet

For further information, availability, please contact your nearest MEGTEC office by visiting [www.megtec.com](http://www.megtec.com) and click on parts and upgrades or email to [info@megtec.com](mailto:info@megtec.com).